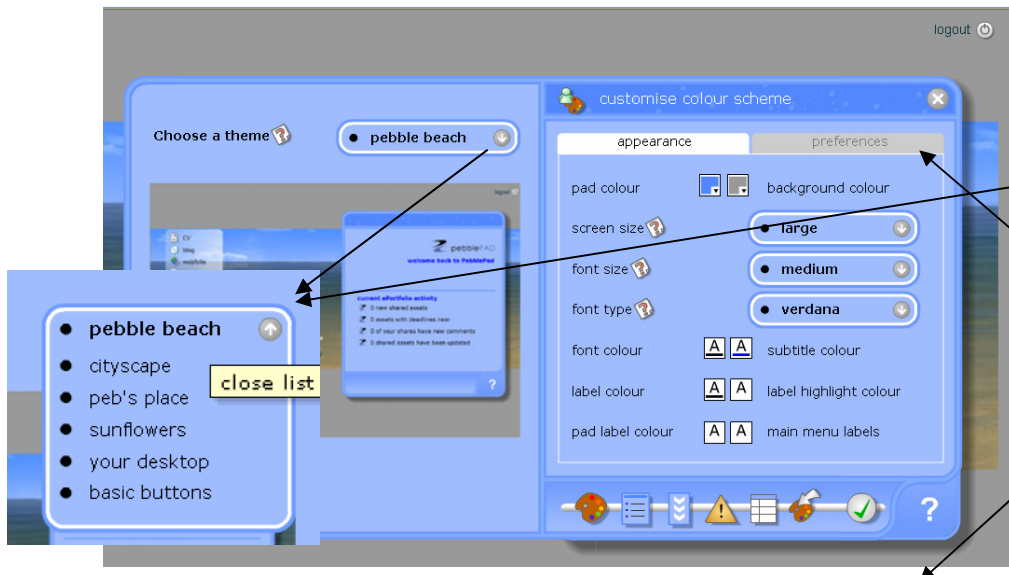


My Settings in PebblePad



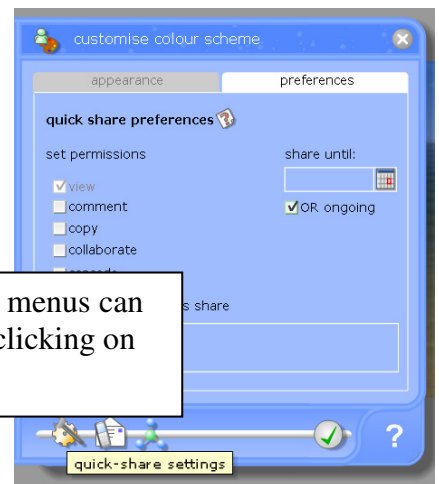
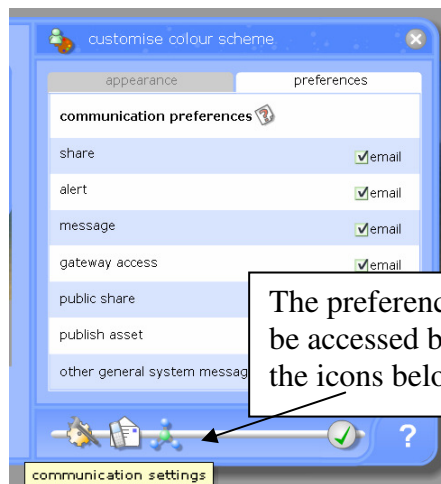
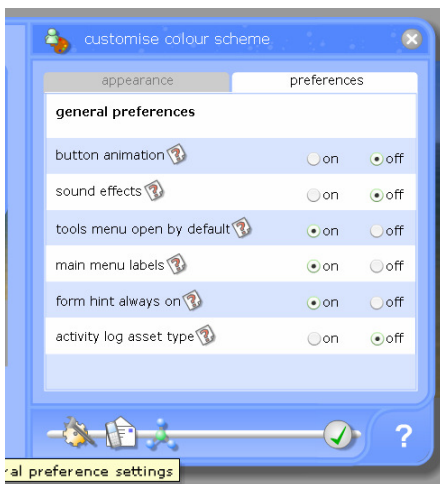
Login to PebblePad, click on the **'tools'** menu and then on the **'my settings'** option

My Settings lets you change many aspects of the **appearance** of PebblePad. It also lets you modify your **preferences**



The **'my settings'** menu is shown left. You can change the **main appearance** from the pebble beach to something else

The **'preferences'** tab has three menus:
General preferences
Communication preferences
Quick share settings

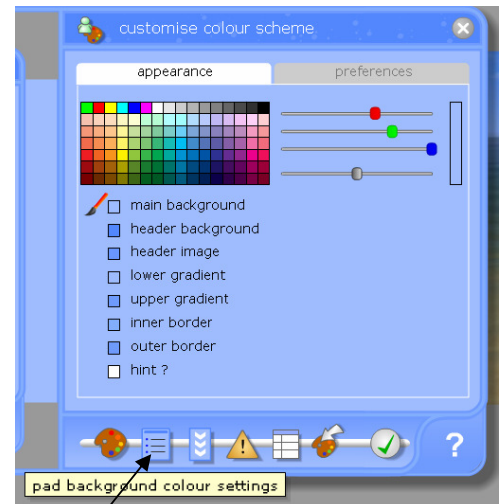


The preferences menus can be accessed by clicking on the icons below

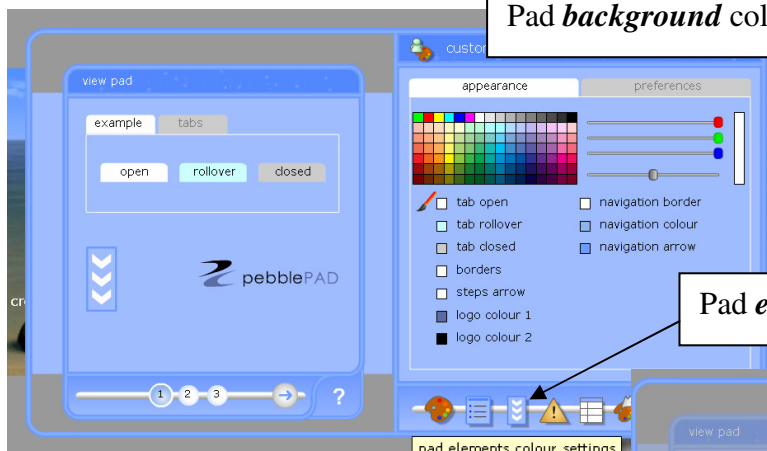


The **appearance** tab has five menus to adjust the appearance

General appearance settings

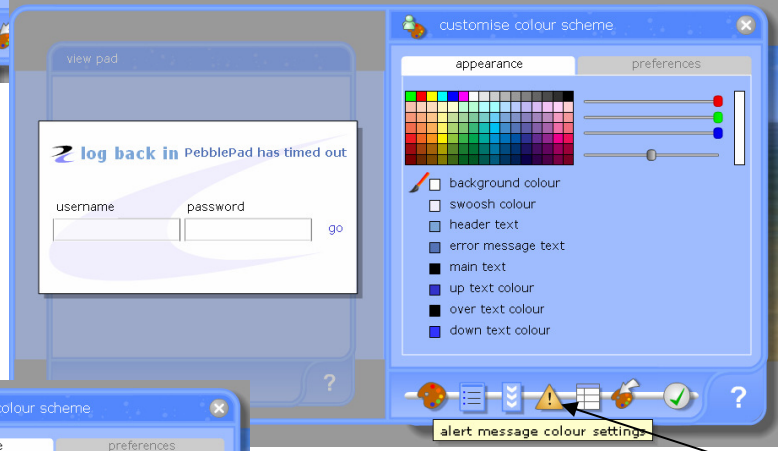


Pad *background* colour settings

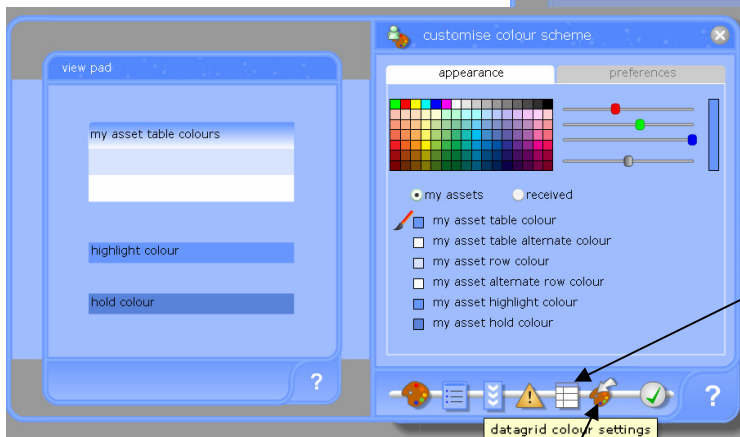


Pad *elements* colour settings

Have a go at changing a few of these settings yourself

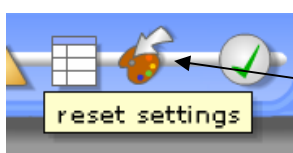


Alert message colour coding



Datagrid colour settings

All settings are saved by clicking on the **green tick**



The '**reset settings**' is very helpful if you just want to return to the original appearance

